

The Weizmann  
Institute innovation  
ecosystem helps  
transform lab research  
into patented products  
and technologies that  
benefit humanity

The innovation ecosystem comprises three separate but interrelated units within the Institute. Together, they leverage basic research breakthroughs from the Institute's world-renowned labs, nurture the most promising applicative projects until they are ripe for the creation of intellectual property (IP), and, as needed, offer an incubator for them to grow into viable commercial entities. Based on Weizmann's IP, more than 110 spinoff companies have been founded.

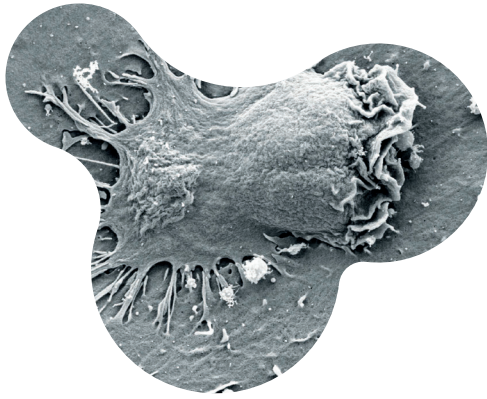
**Prof. Irit Sagi**

Vice President for Innovation  
& Technology Transfer  
vp.tt@weizmann.ac.il



Doing good in the  
world starts with  
Innovation  
at Weizmann

# Bina



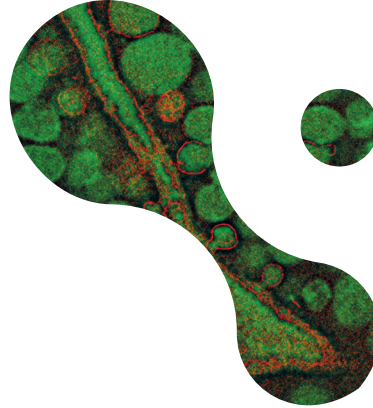
## Nurture

Bina provides mentoring, guidance and funding to transform basic science into applied research. Bina also runs active outreach programs and collaborations to encourage applied research across campus, and educational programs to equip researchers with applied science skills.

**Dr. Sharon Fireman, Head of Bina**  
Sharon.fireman@weizmann.ac.il



# Yeda



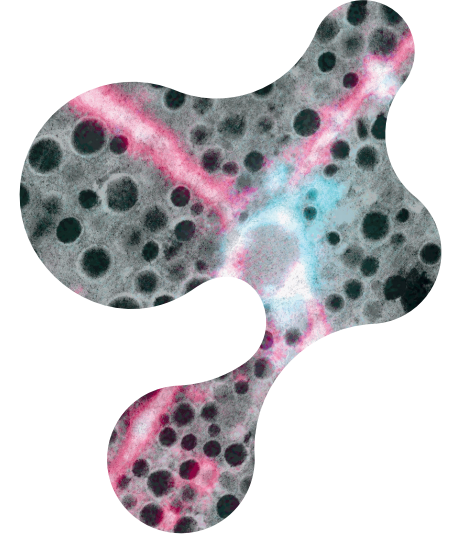
## Commercialization

Yeda is the second academic technology transfer company in the world. Through collaboration with scientists, Yeda protects IP based on lab discoveries and licenses it to companies. The income generated from licensing the IP is funnelled back into Weizmann research labs in order to perpetuate the innovation and discovery process in a continuous cycle.

**Dr. Opher Shapira, CEO of Yeda**  
Opher.shapira@weizmann.ac.il



# WIN



## Enablement

The newly formed Weizmann Innovation Nest (WIN) fosters the development of early-stage technologies to the point where they can become independent companies. WIN is an off-campus operation under Yeda that provides teams with guidance and funding until they reach seed stage.

**Dr. Opher Shapira, WIN**  
Opher.shapira@weizmann.ac.il

